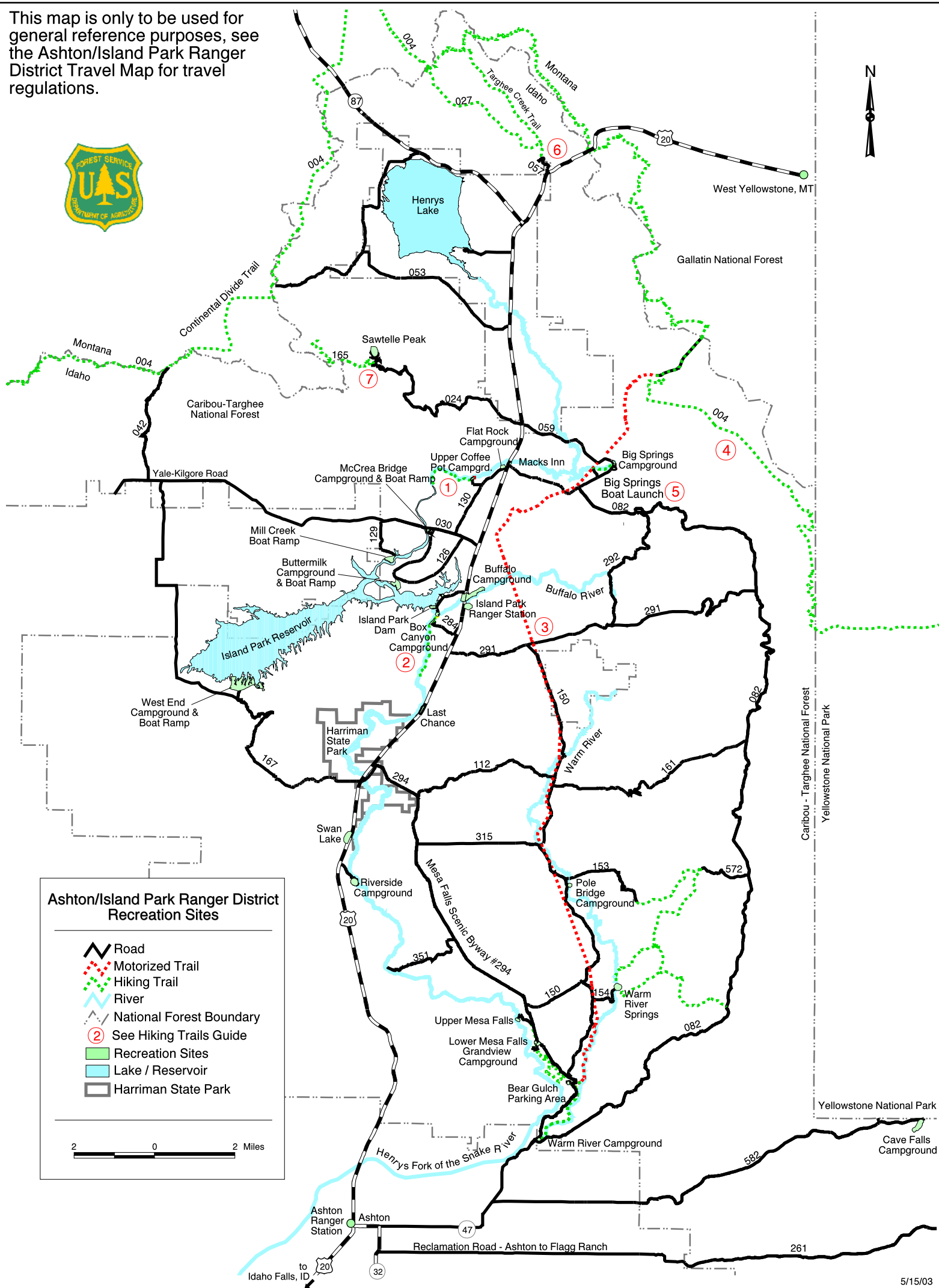


This map is only to be used for general reference purposes, see the Ashton/Island Park Ranger District Travel Map for travel regulations.



**Ashton/Island Park Ranger District Recreation Sites**

- Road
- Motorized Trail
- Hiking Trail
- River
- National Forest Boundary
- See Hiking Trails Guide
- Recreation Sites
- Lake / Reservoir
- Harriman State Park

2 0 2 Miles